

For general area location reference.

Paulina Peak
La Pine

Burns

Christmas Valley

Dust Devil Mining

Klamath Falls

Steens Mountain Wilderness

Traveling South from Western and Northern areas

Christmas Valley

Do NOT take this way unless you have a solid 4x4. The road is rough and rutted. Rocks are larger than gravel.
NO - Corn Lake Rd
NO - Nasty Flats Rd

Turn Here!

Hogback Road

Public Collection area.

Dust Devil Mining

This is accurate if you are going 20mph
🚗 1 hr 43 min
33.7 miles

Another sign! Turn left here! This one is pretty obvious as you approach.

At 17miles from your turn onto 395, there is a Sunstone sign! Turn left.

Plush and Lakeview

Another quick left here at the next sign. Roughly 1/8 mile from previous turn.

State Holding

Lake Abert

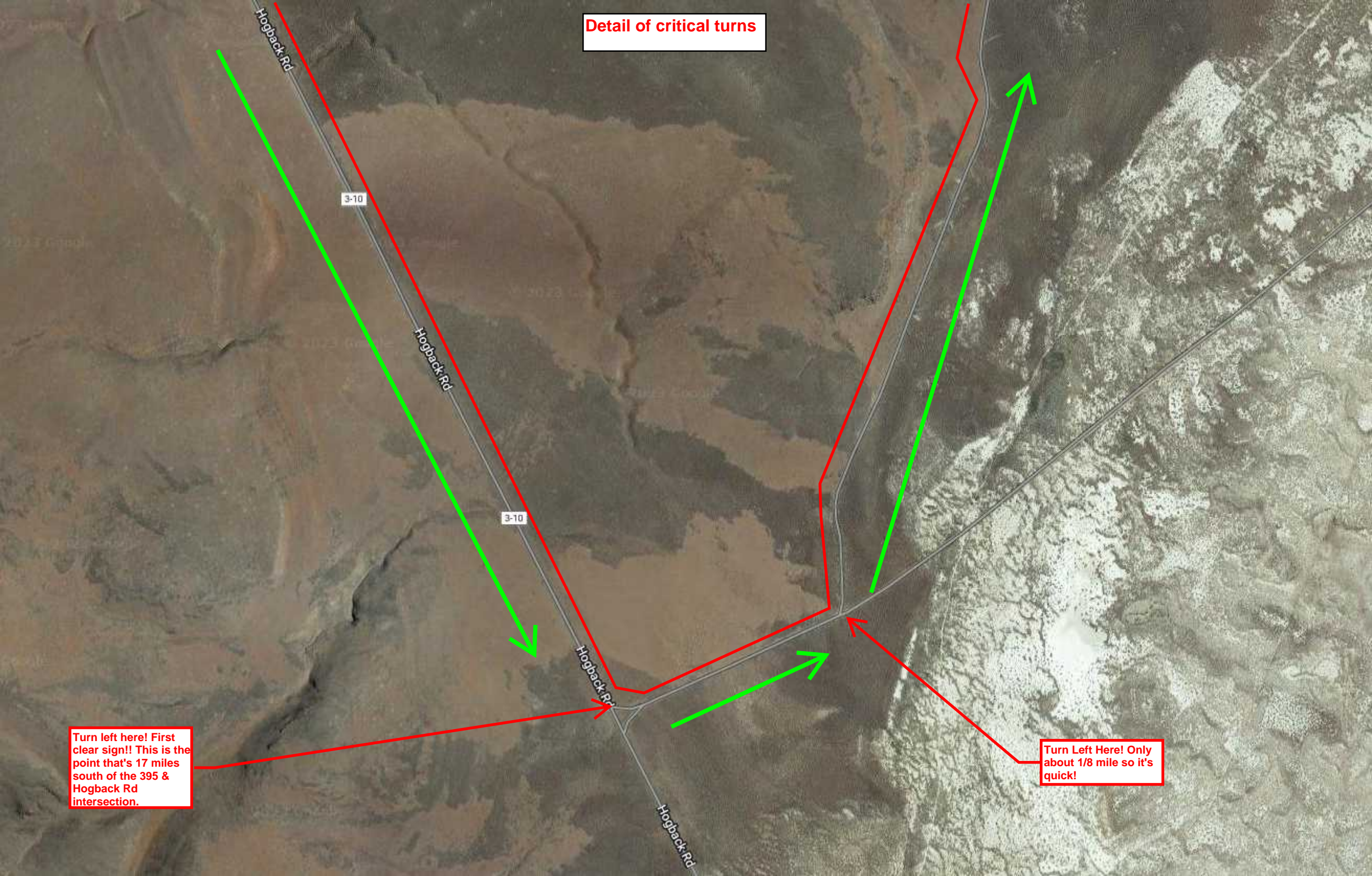
395

395

395



Detail of critical turns



Turn left here! First clear sign!! This is the point that's 17 miles south of the 395 & Hogback Rd intersection.

Turn Left Here! Only about 1/8 mile so it's quick!